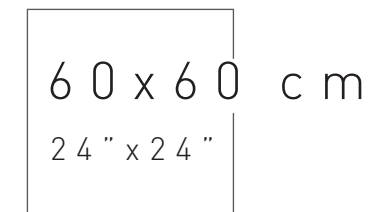
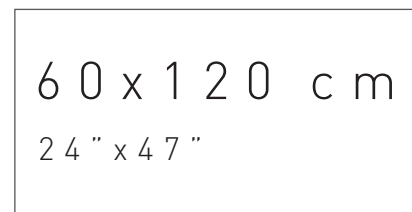


UN INSIEME
 DI CONTRASTI, SEGNI E
 PICCOLE IMPERFEZIONI, CHE
 RACCONTANO ATMOSFERE INTRISE
 DI STORIE PASSATE, PUNTANDO
 CON DECISIONE A UNO STILE
 CONTEMPORANEO.

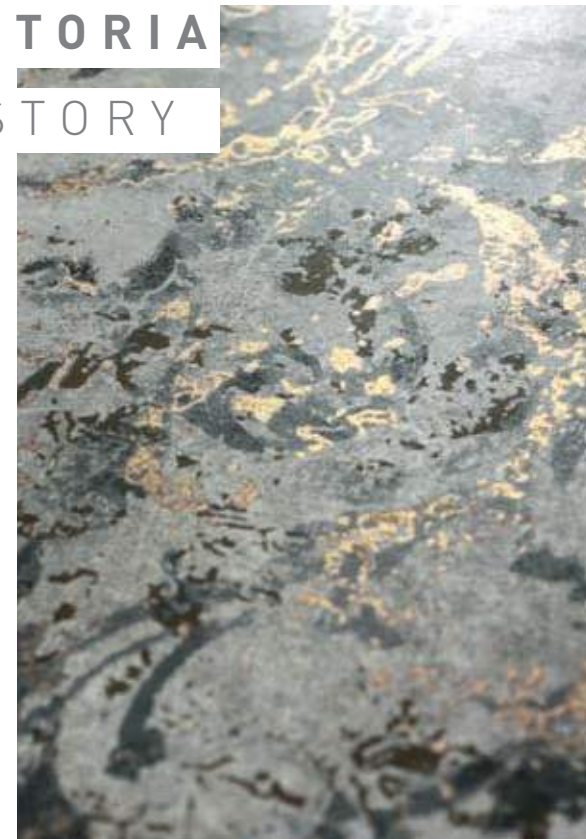
CARATTERIZZATE DA UNO
 SPESSORE DI 7mm, LE PROPOSTE
 DECORATIVE DI **FRESCO** SONO
 IN LINEA CON LE ESIGENZE
 STILISTICHE DELL'ARCHITETTURA
 MODERNA.

GRES FINE PORCELLANATO spessore 7 mm
 FINE PORCELAIN STONEWARE thickness 7 mm

2 FORMATI
 SIZES



TRACCE INDELEBILI DI STORIA
 INDELIBLE SIGNS OF HISTORY

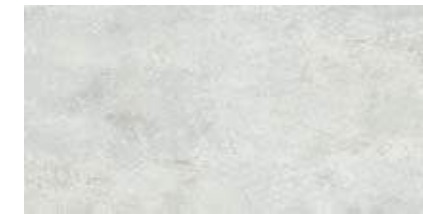


CONTRASTS, MARKINGS AND SMALL
 IMPERFECTIONS THAT TELL OF ENVIRONMENTS
 IMBIBED IN HISTORY, DECISIVELY FOCUSING ON
 A CONTEMPORARY STYLE.

WITH A THICKNESS OF 7mm, THE DECORATIVE
 OFFERINGS OF FRESCO ARE IN LINE WITH THE
 STYLISTIC NEEDS OF MODERN ARCHITECTURE



6 COLORI
 COLOURS



ESTE



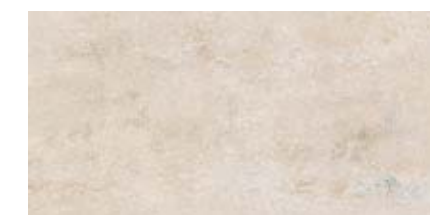
ARAGONA



SCALIGERI



VISCONTI



GONZAGA



REGIO

3 TEMI DECORATIVI
 DECORATIVE THEMES



INTERNI MIX



INTERNI AVIO MIX

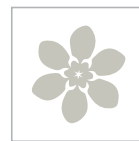


CASATE

I PLUS DEL GRÈS PORCELLANATO
 THE BENEFITS OF PORCELAIN TILE



**TRANQUILLITÀ
 DI UN'IGIENE
 SICURA**
 HIGIENICALLY SAFE



ANALLERGENICO
 HYPOALLERGENIC



**RESISTENZA
 DEI COLORI
 ALLA LUCE**
 LIGHT STABILITY



ECOSOSTENIBILE



**RESISTENZA
 ALLA FLESSIONE**
 FLEXION RESISTANCE



IMPERMEABILE
 WATERPROOF



**RESISTENZA
 ALLE MACCHIE**
 STAIN RESISTANCE



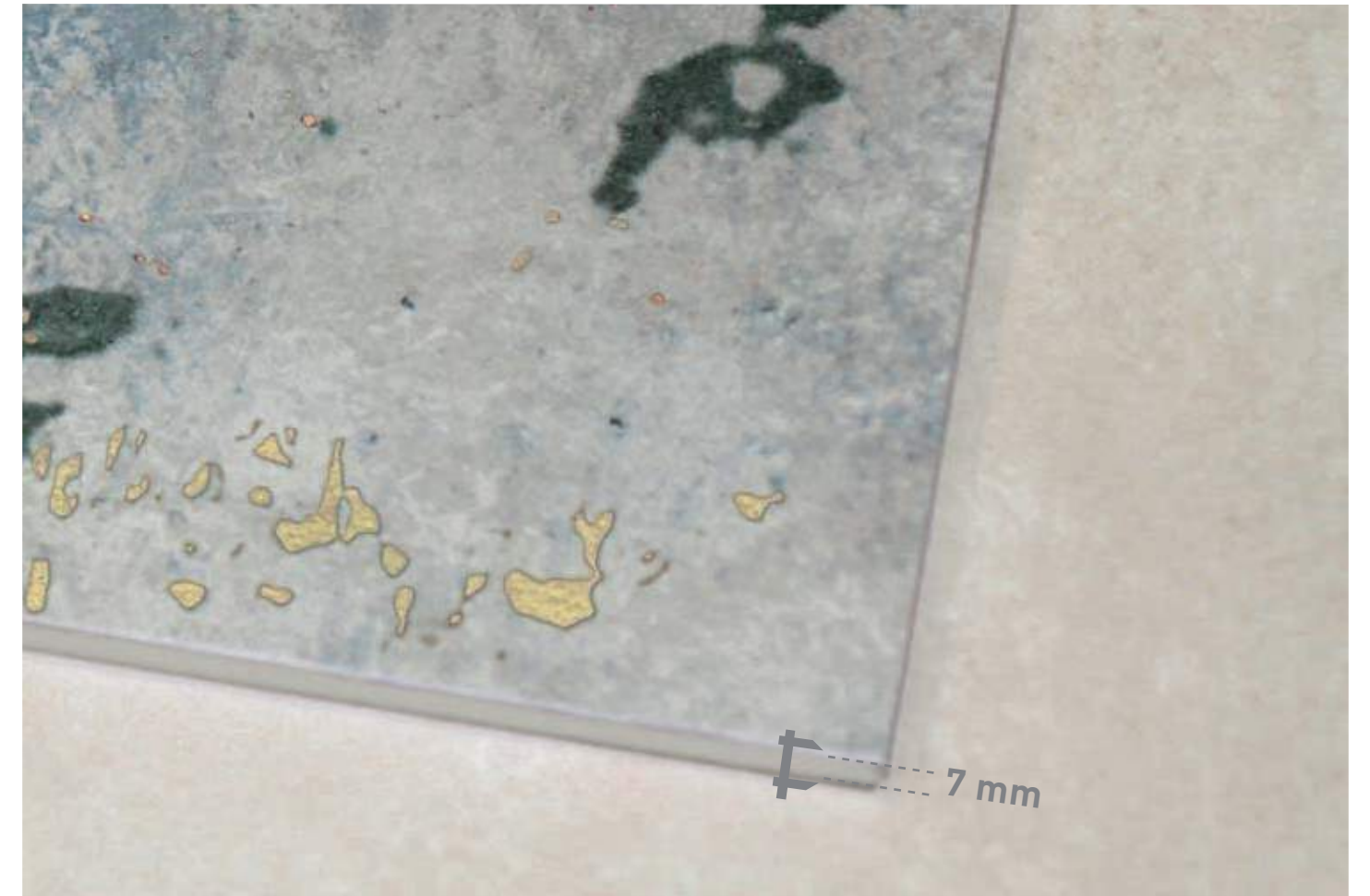
**RESISTENZA
 AL GELO**
 FROST RESISTANCE



**RESISTENZA
 ALL'ATTACCO
 CHIMICO**
 CHEMICAL RESISTANCE



IGNIFUGO
 FIREPROOF



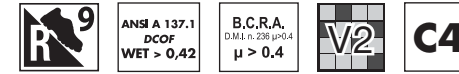
QUALITÀ E TECNOLOGIA IN 7 mm

QUALITY AND TECHNOLOGY IN 7 mm

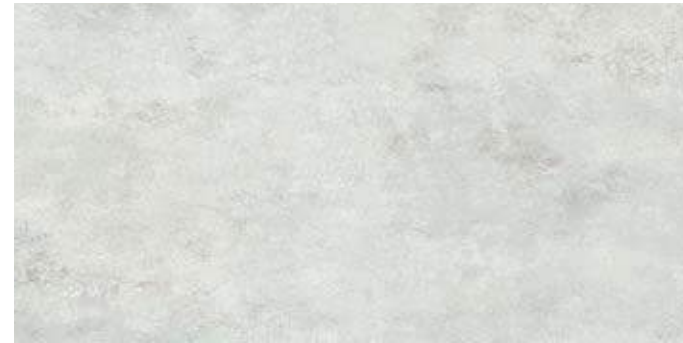
LE SOLUZIONI IN GRÈS PORCELLANATO CON UNO SPESSORE DI 7 mm SONO ESPRESSIONE DELLE PIÙ INNOVATIVE TECNOLOGIE PRODUTTIVE APPLICATE AL SETTORE DEI RIVESTIMENTI CERAMICI. LO SPESSORE CONTENUTO MANTIENE INTATTE LE STRAORDINARIE CARATTERISTICHE DI RESISTENZA, IGIENE E MANUTENZIONE DEL MATERIALE, A FRONTE DI PRODOTTI DAL PESO RIDOTTO, PIÙ FACILI DA MOVIMENTARE E DA POSARE, PER REALIZZARE PARETI E PAVIMENTI, PER NUOVI INTERVENTI E PER RISTRUTTURAZIONI.

PORCELAIN TILE SOLUTIONS WITH A THICKNESS OF 7 mm ARE AN EXPRESSION OF THE MOST INNOVATIVE PRODUCTION TECHNOLOGIES APPLIED TO THE SECTOR OF CERAMIC TILING. ITS REDUCED THICKNESS MAINTAINS ITS EXTRAORDINARY RESISTANCE, HYGIENE AND MAINTENANCE OF THE MATERIAL INTACT, WITH PRODUCTS THAT WEIGH LESS AND ARE EASIER TO HANDLE AND LAY IN MAKING WALLS AND FLOORS, BOTH IN NEW BUILDS AND RENOVATIONS.

GRES FINE PORCELLANATO spessore 7 mm
 FINE PORCELAIN STONEWARE thickness 7 mm



60x120 . 24"x47"
115716 ARAGONA nat. rett.



60x120 . 24"x47"
115718 ESTE nat. rett.



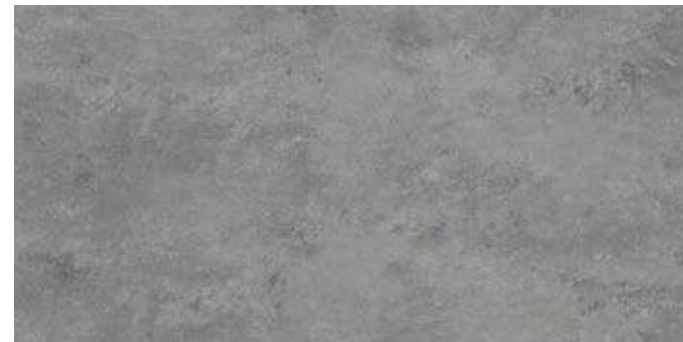
60x120 . 24"x47"
115721 SCALIGERI nat. rett.



32,5x32,5 . 12,7"x12,7"
114367 MOS.SCALIGERI (T144)



60x120 . 24"x47"
115719 GONZAGA nat. rett.



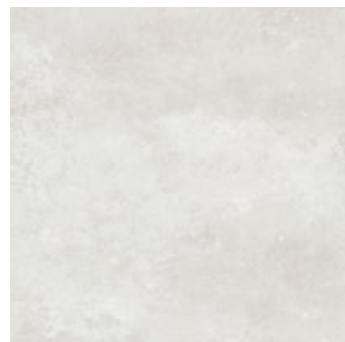
60x120 . 24"x47"
115722 VISCONTI nat. rett.



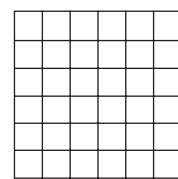
60x120 . 24"x47"
115720 REGIO nat. rett.



32,5x32,5 . 12,7"x12,7"
113749 MOS.REGIO (T144)

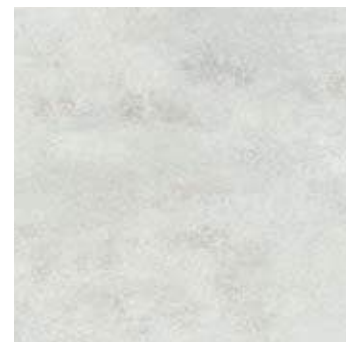


60x60 . 24"x24"
114181 ARAGONA nat. rett.

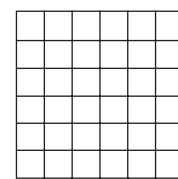


4,7x4,7 . 1,8"x1,8"
MOSAICO SU RETE
30x30 . 12"x12"

115210 ARAGONA nat.



60x60 . 24"x24"
114180 ESTE nat. rett.

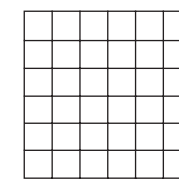


4,7x4,7 . 1,8"x1,8"
MOSAICO SU RETE
30x30 . 12"x12"

115211 ESTE nat.

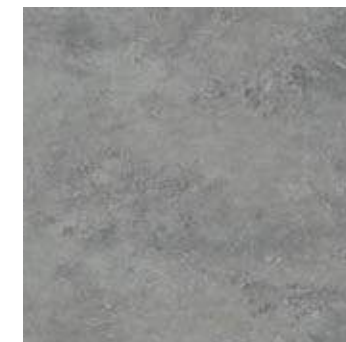


60x60 . 24"x24"
114182 GONZAGA nat. rett.

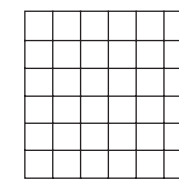


4,7x4,7 . 1,8"x1,8"
MOSAICO SU RETE
30x30 . 12"x12"

115212 GONZAGA nat.



60x60 . 24"x24"
114183 VISCONTI nat. rett.



4,7x4,7 . 1,8"x1,8"
MOSAICO SU RETE
30x30 . 12"x12"

115213 VISCONTI nat.

SUPERFICI DECORATE

DECOR SURFACES



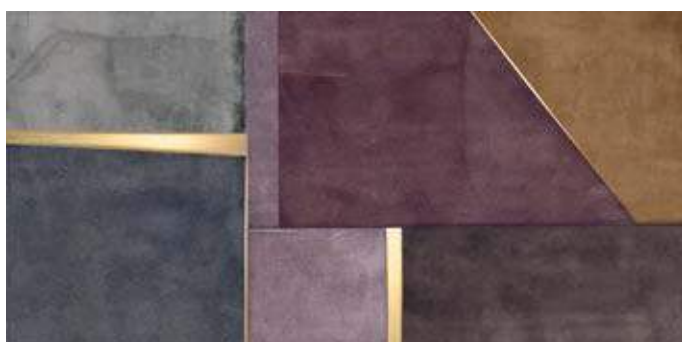
60x120 . 24"x47"
113742 FASCIA CASATE



60x120 . 24"x47"
113745 FASCIA INTERNI MIX



60x120 . 24"x47"
113744 FASCIA INTERNI AVIO MIX



120x260 . 47"x102"
***115164 LASTRA INTERNI**

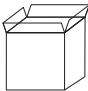
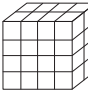


120x260 . 47"x102"
115163 LASTRA CASATE

***DUE VERSIONI A SCELTA**
[AMBIENTE PAG 23]
TWO VERSIONS CHOICE
[SETTING PAG 23]

PESI E IMBALLI

WEIGHTS AND PACKAGING

		60x120	FASCIA 60x120	MOSAICO 32,5x32,5	60x60	MOSAICO 30x30	120x260
	Pc.	3	1	5	4	14	1
	M ²	2,16	0,72	0,528	1,44	1,26	3,12
	Kg	35,67	13,15	11,125	23,75	20,74	53
	Colli boxes	30	-	-	40	-	20
	M ²	64,8	-	-	57,6	-	56
	Kg	1070	-	-	950	-	1060

CATEGORIE D'IMPIEGO USE CLASSES

C1 **PIASTRELLE DA PAVIMENTO CONSIGLIA-
TE PER CALPESTIO LIEVE**
FLOOR TILES RECOMMENDED FOR LOW
PASSAGE AREAS

C2 **PIASTRELLE DA PAVIMENTO CONSIGLIA-
TE PER CALPESTIO LEGGERO**
FLOOR TILES RECOMMENDED FOR LIGHT
TRAFFIC AREAS

C3 **PIASTRELLE DA PAVIMENTO CONSIGLIE
PER CALPESTIO MEDIO-LEGGERO**
FLOOR TILES RECOMMENDED FOR
MEDIUM-LIGHT TRAFFIC AREAS

C4 **PIASTRELLE DA PAVIMENTO CONSIGLIE
PER CALPESTIO MEDIO**
FLOOR TILES RECOMMENDED FOR
MEDIUM TRAFFIC AREAS

C5 **PIASTRELLE DA PAVIMENTO IN CERAMICA
CONSIGLIE PER CALPESTIO INTENSO**
CERAMIC TILES RECOMMENDED FOR HIGH
TRAFFIC AREAS

 **PIASTRELLE PER RIVESTIMENTO PARETI**
TILES FOR WALLS

 **PIASTRELLE PER RIVESTIMENTO PAVIMENTI**
TILES FOR FLOORS

NOTE

NOTES

**I PRODOTTI POSSONO ESSERE MODIFICATI DA FINCIBEC SENZA PREAVVISO, RESPINGENDO OGNI RESPONSABILITÀ SU POSSIBILI
DANNI DIRETTI O INDIRETTI CAUSATI DA POTENZIALI MODIFICHE.**
FINCIBEC RESERVES THE RIGHT TO MODIFY ITS PRODUCTS WITHOUT PRIOR NOTICE AND CANNOT BE HELD LIABLE FOR DIRECT OR
INDIRECT DAMAGE CAUSED BY SUCH MODIFICATIONS.

**VERIFICARE SEMPRE LA CORRETTEZZA DELLE INFORMAZIONI E DEI DATI RELATIVI A CODICI, IMBALLAGGI E PESI, CONSULTANDO
IL LISTINO PREZZI IN VIGORE.**
ALWAYS REFER TO THE PRICE LIST IN FORCE TO ENSURE CORRECT INFORMATION AND DATA ON CODES, PACKAGING, AND WEIGHT.

LE TONALITÀ DEI COLORI RIPORTATE NEL CATALOGO SONO INDICATIVE.
THE COLOURS SHADES, REPORTED ON THE CATALOGUE, ARE INDICATIVE.

VARIAZIONI CROMATICHE COLOUR VARIATIONS

 **V1 ASPETTO UNIFORME**
EVEN APPEARANCE

 **V2 LIEVE VARIAZIONE**
LIGHT VARIATION



















 **V3 MEDIA VARIAZIONE**
MEDIUM VARIATION

 **V4 INTENSA VARIAZIONE**
STRONG VARIATION

**È INDISPENSABILE ALL'ATTO DELLA POSA,
PRELEVARE LE PIASTRELLE DA PIÙ CONFEZIONI.**

IT IS NECESSARY TO TAKE THE TILES FROM SEVERAL
DIFFERENT BOXES WHEN LAYING THEM.

CARATTERISTICHE TECNICHE / GRES FINE PORCELLANATO COLORATO IN MASSA
TECHNICAL SPECIFICATIONS / COLOURED PORCELAIN STONWARE - TECHNISCHE EIGENSCHAFTEN / DURCHGEFÄRBTES
FEINSTEINZEUG - CARACTÉRISTIQUES TECHNIQUES / GRÉS FIN CÉRAME COLORÉ EN MASSE - CARACTERÍSTICAS TÉCNICAS / GRES
FINO PORCELÁNICO TEÑIDO EN MASA - ТЕХНИЧЕСКИЕ ХАРАКТЕРИСТИКИ / МЕЛКОЗЕРНИСТЫЙ КЕРАМОГАНИТ, ОКРАШЕННЫЙ В МАССЕ
STANDARDS : UNI EN 14411 ANNEX G - Bla / UNI EN ISO 13006 ANNEX G - Bla

CARATTERISTICHE TECNICHE TECHNICAL DATA TECHNISCHE DATEN CARACTÉRISTIQUES TECHNIQUES CARACTERÍSTICAS TÉCNICAS ТЕХНИЧЕСКИЕ ХАРАКТЕРИСТИКИ	TIPO DI PROVA STANDARD OF TEST NORME DU TEST TESTNORM TIPO DE PRUEBA TIPO TESTA	VALORI PRESCRITTI DALLE NORME INTERNATIONAL STANDARDS INTERNATIONALE NORMWERTE VALEURS PREVUES PAR LES NORMES VALORES PREVISTOS POR LAS NORMAS ПРЕДУСМОТРЕННЫЕ СТАНДАРТОМ		VALORE MEDIO NAXOS NAXOS AVERAGE VALUE NAXOS MITTELWERT VALEURS MOYEN NAXOS VALOR MEDIO NAXOS СРЕДНЕЕ ЗНАЧЕНИЕ NAXOS
		REQUIREMENTS FOR NOMINAL SIZE N		NAT
CARATTERISTICHE DIMENSIONALI - SIZE CHARACTERISTICS MASSEIGENSCHAFTEN - DETERMINATION DES CARACTÉRISTIQUES DIMENSIONNELLES CARACTERÍSTICAS DIMENSIONALES - РАЗМЕРНЫЕ ХАРАКТЕРИСТИКИ		7 cm ≤ N ≤ 15 cm	N ≥ 15 cm	
 LATI - SIDES - SEITEN COTES - CANTOS РАЗМЕРЫ СТОРОН	EN ISO 10545-2	± 0,9 mm	± 0,6 % (± 2,0 mm)	CONFORME COMPLYING - ERFÜLLT CONFORME - CONFORME СООТВЕТСТВУЕТ
 SPESSORE THICKNESS - DICKE ÉPAISSEUR - ESPESOR ТОЛЩИНА	EN ISO 10545-2	± 0,5 mm	± 5,0 % (± 0,5 mm)	CONFORME COMPLYING - ERFÜLLT CONFORME - CONFORME СООТВЕТСТВУЕТ
 RETTILINEITÀ DEGLI SPIGOLI STRAIGHTNESS OF SIDES - GERADLINIGKEIT DER KANTEN RECTITUDE DES ARÊTES - RECTITUD DE LOS CANTOS - КОСОУГОЛЬНОСТЬ	EN ISO 10545-2	± 0,75 mm	± 0,5% (± 1,5 mm)	CONFORME COMPLYING - ERFÜLLT CONFORME - CONFORME СООТВЕТСТВУЕТ
 ORTOGONALITÀ RECTANGULARITY - RECHTWINKLIGKEIT PERPENDICULARITÉ - ORTOGONALIDAD КРИВИЗНА СТОРОН	EN ISO 10545-2	± 0,75 mm	± 0,5% (± 2 mm)	CONFORME COMPLYING - ERFÜLLT CONFORME - CONFORME СООТВЕТСТВУЕТ
 PLANARITÀ SURFACE FLATNESS - EBENFLÄCHIGKEIT PLANEITÉ DE SURFACE - PLANEIDAD КРИВИЗНА ЛИЦЕВОЙ ПОВЕРХНОСТИ	EN ISO 10545-2	± 0,75 mm	± 0,5% (± 2,0 mm)	CONFORME COMPLYING - ERFÜLLT CONFORME - CONFORME СООТВЕТСТВУЕТ
 ASSORBIMENTO D'ACQUA WATER ABSORPTION - WASSERAUFNAHME ABSORPTION D'EAU - ABSORCIÓN DE AGUA ВОДОПОГЛОЩЕНИЕ	EN ISO 10545-3	≤ 0,5 %		≤ 0,1 %
 RESISTENZA ALLA FLESSIONE FLEXION RESISTANCE - BIEGEFESTIGKEIT RESISTENCIA A LA FLEXIÓN - RESISTENCIA A LA FLEXIÓN ПРЕДЕЛ ПРОЧНОСТИ ПРИ ИЗГИБЕ	EN ISO 10545-4	S ≥ 700 N \bar{f} < 7,5 mm		CONFORME COMPLYING - ERFÜLLT CONFORME - CONFORME СООТВЕТСТВУЕТ
		S ≥ 1.300 N \bar{f} ≥ 7,5 mm		
		R ≥ 35 N/mm ²		
 RESISTENZA ALL'URTO IMPACT RESISTANCE - STOSSFESTIGKEIT RESISTANCE AUX CHOCES - RESISTENCIA A LOS GOLPES УДАРОСТОЙКОСТЬ	EN ISO 10545-5	VALORE DICHIARATO DECLARED VALUE - ANGEBEBENER WERT VALEUR DÉCLARÉE - VALOR DECLARADO ЗАЯВЛЕННОЕ ЗНАЧЕНИЕ		> 0,80
 COEFFICIENTE DI DILATAZIONE TERMICA LINEARE COEFFICIENT OF LINEAR THERMAL EXPANSION LINEARER WÄRMEALSDENUNGSKOEFFIZIENT - COEFFICIENT DE DILATATION THERMIQUE LINEAIRE - COEFFICIENTE DE DILATACIÓN TÉRMICA LINEAL КОЭФФИЦИЕНТ ЛИНЕЙНОГО ТЕРМИЧЕСКОГО РАСШИРЕНИЯ	EN ISO 10545-8	VALORE DICHIARATO DECLARED VALUE - ANGEBEBENER WERT VALEUR DÉCLARÉE - VALOR DECLARADO ЗАЯВЛЕННОЕ ЗНАЧЕНИЕ		$\alpha = 6,7 \times 10^{-6} / ^\circ\text{C}$
 RESISTENZA AGLI SBALZI TERMICI RESISTANCE TO THERMAL SHOCKS - BESTÄNDIGKEIT GEGEN TEMPERATURSCHWANKUNGEN - RESISTANCE AUX CHOCES THERMIQUES RESISTENCIA A LOS CHOQUES TÉRMICOS - СТОЙКОСТЬ К ПЕРЕПАДАМ ТЕМПЕРАТУРЫ	EN ISO 10545-9	TEST SUPERATO SECONDO EN ISO 10545-1 TEST PASSED ACCORDING TO - TEST BESTANDEN NACH TEXTE DÉPASSÉ SELON - PRUEBA SUPERADA SEGUN ИСПЫТАНИЕ ПРОЙДЕНО В СООТВЕТСТВИИ С		NESSUN DANNO NO DAMAGE - KEIN SCHADEN AUCUN DOMMAGE - NINGUN DANO БЕЗ ПОВРЕЖДЕНИЙ
 DILATAZIONE ALL'UMIDITÀ (IN MM/M) MOISTURE EXPANSION (IN MM/M) - FEUCHTIGKEITSBEDINGTE AUSDEHNUNG (IN MM/M) DILATATION À L'HUMIDITÉ (EN MM/M) DILATACIÓN CON LA HUMEDAD (EN MM/M)	EN ISO 10545-10	VALORE DICHIARATO DECLARED VALUE - ANGEBEBENER WERT VALEUR DÉCLARÉE - VALOR DECLARADO ЗАЯВЛЕННОЕ ЗНАЧЕНИЕ		MAX 0,1 mm / m
 RESISTENZA AL GELO FROST RESISTANCE - FROSTBESTÄNDIGKEIT RESISTANCE AU GEL - RESISTENCIA AL HIELO МОРОЗОСТОЙКОСТЬ	EN ISO 10545-12	TEST SUPERATO SECONDO EN ISO 10545-1 TEST PASSED ACCORDING TO - TEST BESTANDEN NACH TEXTE DÉPASSÉ SELON - PRUEBA SUPERADA SEGUN ИСПЫТАНИЕ ПРОЙДЕНО В СООТВЕТСТВИИ С		NESSUN DANNO NO DAMAGE - KEIN SCHADEN AUCUN DOMMAGE - NINGUN DANO БЕЗ ПОВРЕЖДЕНИЙ
 RESISTENZA AI PRODOTTI CHIMICI USO DOMESTICO E ADDITIVI PER PISCINA RESISTANCE TO HOUSEHOLD AND SWIMMING POOL CHEMICAL PRODUCTS BESTÄNDIGKEIT GEGEN HAUSHALTSCHIMIKALIEN UND ZUSATZSTOFFE FÜR SWIMMINGPOOLS - RESISTANCE AUX PRODUITS CHIMIQUES USAGE DOMESTIQUE ET ADDITIFS POUR PISCINE - RESISTENCIA A LOS PRODUCTOS QUÍMICOS DE USO DOMÉSTICO Y ADITIVOS PARA PISCINA - СТОЙКОСТЬ К ДЕЙСТВИЮ БЫТОВЫХ ХИМИЧЕСКИХ СРЕДСТВ, ДОБАВКАМ В БАССЕЙНЫ	EN ISO 10545-13	B MIN		CONFORME COMPLYING - ERFÜLLT CONFORME - CONFORME СООТВЕТСТВУЕТ
 RESISTENZA A BASSE CONCENTRAZIONI DI ACIDI E ALCALI RESISTANCE TO LOW CONCENTRATIONS OF ACIDS AND ALKALI - BESTÄNDIGKEIT BEI NIEDRIGEN KONZENTRATIONEN VON SAUREN UND LAUGEN - RESISTANCE À BASSES CONCENTRATIONS D'ACIDES ET ALCALIS - RESISTENCIA A BAJAS CONCENTRACIONES DE ÁCIDOS Y ÁLCALIS - СТОЙКОСТЬ К ДЕЙСТВИЮ НИЗКИХ КОНЦЕНТРАЦИЙ КИСЛОТ И ЩЕЛОЧЕЙ	EN ISO 10545-13	VALORE DICHIARATO DECLARED VALUE - ANGEBEBENER WERT VALEUR DÉCLARÉE - VALOR DECLARADO ЗАЯВЛЕННОЕ ЗНАЧЕНИЕ		CONFORME COMPLYING - ERFÜLLT CONFORME - CONFORME СООТВЕТСТВУЕТ
 RESISTENZA AD ALTE CONCENTRAZIONI DI ACIDI E ALCALI RESISTANCE TO HIGH CONCENTRATIONS OF ACIDS AND ALKALI - BESTÄNDIGKEIT BEI HOHEN KONZENTRATIONEN VON SAUREN UND LAUGEN - RESISTANCE À HAUTES CONCENTRATIONS D'ACIDES ET ALCALIS - RESISTENCIA A ALTAS CONCENTRACIONES DE ÁCIDOS Y ÁLCALIS - СТОЙКОСТЬ К ДЕЙСТВИЮ ВЫСОКИХ КОНЦЕНТРАЦИЙ КИСЛОТ И ЩЕЛОЧЕЙ	EN ISO 10545-13	VALORE DICHIARATO DECLARED VALUE - ANGEBEBENER WERT VALEUR DÉCLARÉE - VALOR DECLARADO ЗАЯВЛЕННОЕ ЗНАЧЕНИЕ		CONFORME COMPLYING - ERFÜLLT CONFORME - CONFORME СООТВЕТСТВУЕТ
 RESISTENZA ALLE MACCHIE RESISTANCE TO STAINS - FLECKENBESTÄNDIGKEIT RESISTANCE AUX TACHES - RESISTENCIA A LAS MANCHAS УСТОЙЧИВОСТЬ К ПЯТНООБРАЗОВАНИЮ	EN ISO 10545-14	VALORE DICHIARATO DECLARED VALUE - ANGEBEBENER WERT VALEUR DÉCLARÉE - VALOR DECLARADO ЗАЯВЛЕННОЕ ЗНАЧЕНИЕ		CONFORME COMPLYING - ERFÜLLT CONFORME - CONFORME СООТВЕТСТВУЕТ
 CESSIONE DI PIOMBO E CADMIO LEAD AND CADMIUM DISCHARGE - ABGABE VON BLEI UND CADMIUM PERTE DE PLOMB ET CADMIUM - CESIÓN DE PLOMO Y CADMIO ВЫДЕЛЕНИЕ СВИНЦА И КАДМИЯ	EN ISO 10545-15	VALORE DICHIARATO DECLARED VALUE - ANGEBEBENER WERT VALEUR DÉCLARÉE - VALOR DECLARADO ЗАЯВЛЕННОЕ ЗНАЧЕНИЕ		< AL LIMITE DI RILEVAMENTO < THAN INSTRUMENT LIMIT < UNMESSBARES WERT < LIMITE DE L'INSTRUMENT < LIMITE DEL INSTRUMENTO < НА ПРЕДЕЛЕ ОПРЕДЕЛИМОСТИ
 SCIVOLOSITÀ SKID RESISTANCE - RUTSCHWERT GLISSANCE - ADHERENCIA СКОЛЬЗКОСТЬ	DM.236/89 BCRA	> 0,40		> 0,40
	ANSI A 137.1	WET DCOF > 0,42		> 0,42
	DIN 51130	-		R9

ESCLUSO PEZZI SPECIALI ED ELEMENTI DECORATIVI - WITH THE EXCEPTION OF SPECIAL PIECES AND DECORS

PER I CERTIFICATI SPECIFICI, E VALORI PUNTUALI, CONTATTARE FINCIBEC SPA - FOR SPECIFIC CERTIFICATES AND DATA, CONTACT FINCIBEC S.P.A. - FÜR SPEZIELLE ZERTIFIKATE UND PUNKTWERTE, FINCIBEC S.P.A. KONTAKTIEREN -
POUR LES CERTIFICATS SPÉCIFIQUES ET LES VALEURS PONCTUELLES, CONTACTER FINCIBEC S.P.A. - PARA LOS CERTIFICADOS ESPECÍFICOS Y LOS VALORES CONCRETOS, CONTACTE CON FINCIBEC S.P.A. - ВО ВПРОСАХ СПЕЦИАЛЬНЫХ
СЕРТИФИКАТОВ И ПОКАЗАТЕЛЕЙ СВЯЖИТЕСЬ С FINCIBEC SPA.